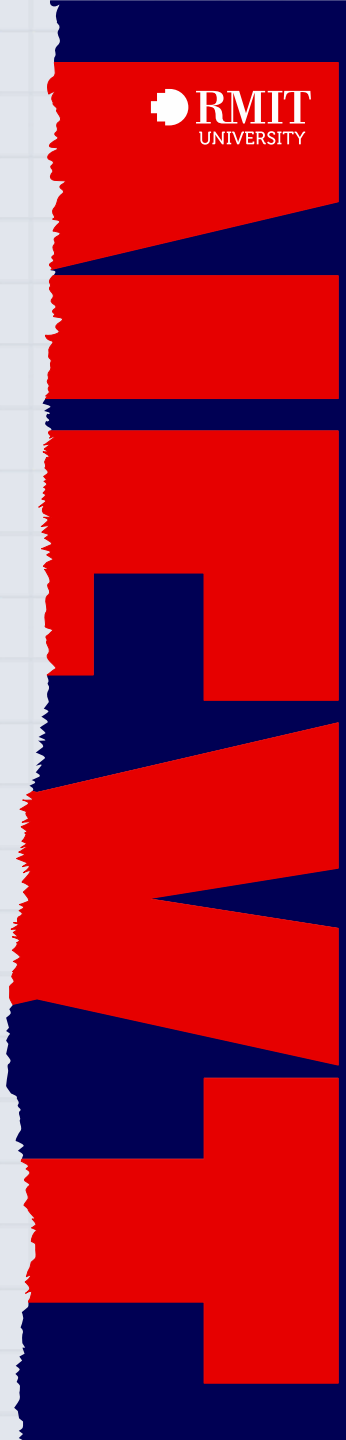




COMMUNITY  
INSIGHTS

# SUMMARY OF COMMUNITY INSIGHTS BY DIRECTION

AS OF NOVEMBER 2021



# 1. DIRECTION: A MISSION-LED UNIVERSITY

## “ Driving community and economic recovery

Supporting our communities to thrive in a post-pandemic world, emphasising access and inclusion through RMIT's multi-sector offerings, research and specialist expertise, working with industry and government to create new skills, jobs and solutions.

## “ Advancing access and equality: empowering all individuals to thrive

A university of choice recognised for building inclusive platforms and cultures that address deep-rooted systemic challenges and progress Reconciliation, Australian First Nations Sovereignty and self-determination, and Gender Equality through learning, public policy, and workplace innovation.



## “ Local impact on a global scale

Growing RMIT's distinct ecosystem of embedded locations, partnerships and commitments to local communities to shape innovative and creative centres around the world.

## “ Prioritising sustainable development for a better future

Developing solutions that address climate change and advance the development of sustainable communities and cities.

## “ Shared vision, trust and wellbeing

Embracing and modelling a culture of wellbeing, empathy, authenticity and honesty to shape a shared vision of excellence and impact.

## 2. DIRECTION: LIFELONG LEARNING REVOLUTION

### Leading education sector reform to elevate lifelong learning

Working purposefully with partners in government and industry to co-create education solutions that meet the evolving needs of lifelong learners in a post pandemic environment

### Innovating curriculum at pace with industry

Embedding co-designed experiences with industry into curriculum, focused on solving real-world problems, meeting future industry needs and creating credentials of value to RMIT students and alumni.

### RMIT students and graduates are agents of change

An RMIT education is a unique experience resulting in graduates/students who are confident, job-ready, digitally adept and can demonstrate and apply expertise and resilience in fast-moving environments.



### Accessible, excellent education for all

RMIT offers education and skills that enable people of all backgrounds to learn and flourish in work and life and helps to grow the high-quality workforce that industry needs across every sector.

### Flexible, curated and inclusive education

Delivering lifelong learning pathways that are multi-directional, suitable for diverse learner and workforce needs across our multi-sector programs.

### Embedded First Nations knowledge

Integrating opportunities for RMIT learners to learn meaningful understanding, awareness, and respect for local Indigenous culture and learning on Country.

### 3. DIRECTION: HYBRID WORK AND LEARNING

#### “ World Class technology to support applied education and experiences

RMIT learning is supported by unique applied technologies including VR and AR tools that can simulate real world experiences. RMIT's application of technology is purposeful and integrated, not just a selling point.

#### “ Creating flexibility to enhance work, learning and life

Experiences are seamless across our hybrid environments, supported by a collaborative work model that enables RMIT people to do their best work without burnout, whilst maximising efficient use of space.



#### “ Collaborative, co-locational campus and precinct design

RMIT campuses are designed for community connection, amplifying opportunities for social exchange, interaction and collaboration across our student, research and industry networks, to build community, deepen academic enquiry and solve complex challenges.

#### “ Big data for personalised learning

Investment in structured data, digital infrastructure, and AI to support insights-driven learning and personalised experiences.



## 4. DIRECTION: AN ADAPTIVE RMIT

### “ Responding in real-time to community needs

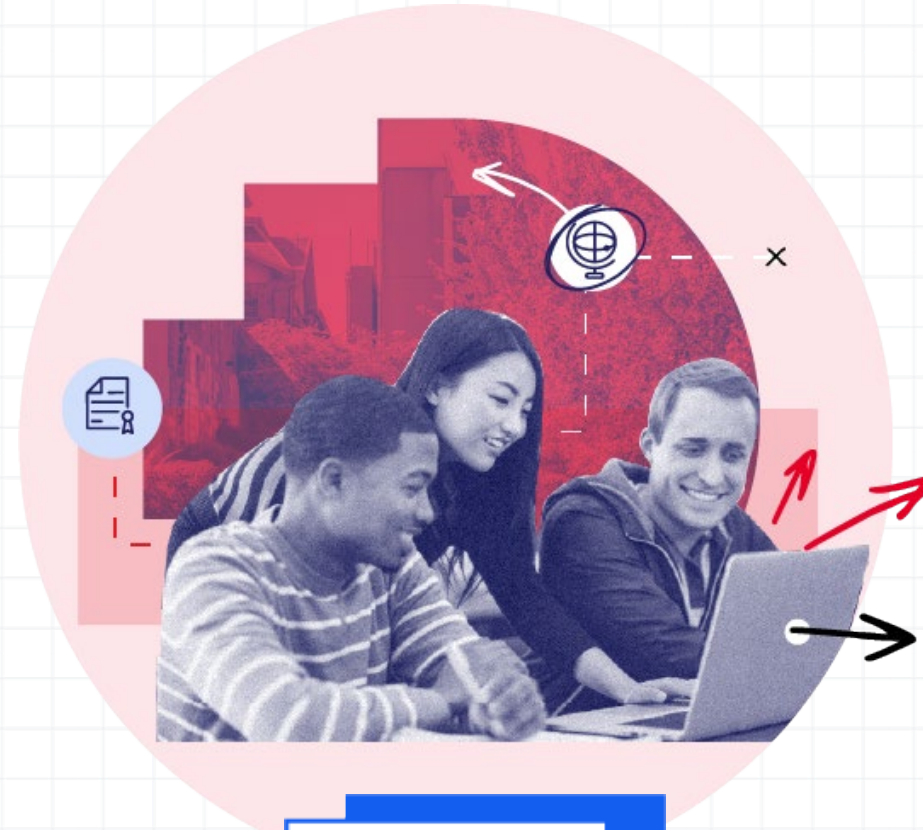
RMIT is an industry leader in connecting organisational capabilities and partner networks to design, pilot and test idea, and solve shared challenges.

### “ Recognising our staff as lifelong learners

Developing workforce structure and culture to encourage meaningful, value contribution and flexible career progression.

### “ RMIT is a Living Lab

Supporting RMIT people to take risks, test ideas, learning continuously and guiding valuable new ideas and approaches to scale.



### “ Creating purposeful learning loops

Connecting and creating learning loops across our organisations, disciplines and partners to ensure both “inside-out” and “outside-in” views.

### “ Human Centred Design approach to systems

Designing and renewing RMIT systems and interfaces, drawing on RMIT’s cross-disciplinary expertise to meet user needs and enhance experience and outcomes.

COMMUNITY  
INSIGHTS

## 5. DIRECTION: IMPACT-DRIVEN RESEARCH AND INNOVATION

### “ Cutting edge research, innovation, and thought leadership

RMIT is an innovation leader, leading the way in key domains across technology, design and enterprise, building and growing innovation ecosystems aligned with our presence, strengths and strategic priorities.



### “ Bold, open, transparent and collaborative

RMIT drives positive impact through genuinely listening to and working with partners to and co-create solutions to shared challenges and achieve impact at scale.



COMMUNITY  
INSIGHTS

### “ Recognising diverse knowledge systems

Elevating and including diverse perspectives, contributions, knowledge systems, ideas and research equity, including Indigenous knowledge and research.

### “ Ethical research and Integrity are core to RMIT’s culture and pursuit of impact

RMIT drives a bold research strategy focused on excellence in discovery, translation and the ethical, trans-disciplinary application of research knowledge to creating valuable outcomes in the economy and society.

6.

## DIRECTION: INTERCONNECTED GLOBAL AND URBAN ECOSYSTEM

### Empowering global citizens

Empowering RMIT learners as agents of change with global minds and cultural intelligence and passionate about a more sustainable future across their lives and careers.

### Driving sustainable global growth

Pursuing strategic opportunities across Asia and the globe to drive impact and build sustainable, inclusive communities through research and education.



### Place-based impact

Growing and better connecting RMIT's distinct ecosystem of embedded global locations and partnerships to break down borders and connect innovative skills, technology and communities.

### University of global experiences

RMIT's global locations are integrated to enable international opportunities for student participation and staff career development across Australia, Asia, Europe and beyond.